

تم تحميل وعرض المادة من

منهجي

mnhaji.com



موقع منهجي منصة تعليمية توفر كل ما يحتاجه المعلم
والطالب من حلول الكتب الدراسية وشرح للدروس
بأسلوب مبسط لكافة المراحل التعليمية وتوزيع
المناهج وتحضير وملخصات ونماذج اختبارات وأوراق
عمل جاهزة للطباعة والتحميل بشكل مجاني

حمل تطبيق منهجي ليصلك كل جديد



Kingdom of Saudi Arabia		الدرجة:
Ministry of Education		
Directorate of Education in Alqunfudah		الاستماع:
AlFaijah Secondary School		
اختبار مادة اللغة الإنجليزية للصف أول ثانوي الفصل الدراسي الاول فترة للعام 1446 هـ		

Guided Composition:

اسم الطالبة

Classify the items into suitable category: earthquake – disease – floods – pollution – global warming

Global Issues	Natural Disasters
1-	1-
2-	2-

B- Make Sentences by Using the **Past Progressive** (when)

1- The Students - wait for - bus – rain - start

.....

2- The people – sleep – the earthquake – happen.

.....

Reading Comprehension

For centuries, people have made major changes in their lives. Many have moved to other countries in search of new lives. One of the great periods of immigration was between 1800 and 1920. At that time, 23 million immigrants arrived in the United States. Most of them came from poor towns and villages in Southern and Eastern Europe. They had one thing in common: They believed that in the United States, life was going to be better for them. It was the land of freedom and prosperity. The trip across the ocean for poor immigrants was terrible. Men, women, and children stayed in crowded and smelly compartments, deep down in the hold of the ship. They had no showers, and there were no dining rooms for them. When immigrants landed in New York, ferryboats took them to Ellis Island, where immigration officers questioned the new arrivals, and doctors examined them. Those who failed the medical exam had to go back to their native countries. Sometimes if a child was ill, the entire family had to return. Ellis Island became known as “Heartbreak Island” among immigrants.

A	Write (T) for True and (F) for False:	True	False
1	People who were sick had to go back to their country		
2	The voyage was hard, but most immigrants had comfortable compartments		
3	At Ellis island, the role of the officials was to give immigrants information about the United States		
4	Ellis Island became known as “ Heartbreak Island” among immigrants		
5	Many of the immigrants were poor		
6	Many immigrants came to the United states in the late 1800s and early 1900s		

Grammar

Choose the correct answer:

1	It is right now.	A	rained	B	rain	C	raining
2	The moon around the earth.	A	goes	B	going	C	go
3	We a nice movie last night.	A	see	B	saw	C	seen
4	She Five times every day.	A	pray	B	prays	C	prayed
5	They havetennis three times	A	play	B	plays	C	played

Vocabulary

a- Fill in the space with the suitable words: (global warming – traffic – economy – disease)

1- Corona virus is a..... that started in China.

2- The in Riyadh is a big problem that there are so many cars.

B- Write the suitable word under each picture: (pollution – unemployment – tornado – economy - flood)



c) Match words in column (A) with the meaning in column (B)

A	B
1- vibrant 2- to establish 3- fit in 4- hub 5- in fact, you see 6- to launch 7- thriving 8- present simple 9- enterprises 10- transforming	a- an expression used to add information. b- business. c- to send into spaces. d- strong and prosperous. e- used to express fact and habitual routine. f- set up, start. g- strong and active . h- changing completely. i- be part of something. j- center

All My Best Wishes

Mid-Term English Language Exam Form for the Year 1443/1444 AH – 1st Semester/1st Period

Name:

10

1. Guided Composition

2

Think of a job you interested in. Then, briefly write a job profile including the qualifications, skills, and personality characteristics that the imaginative job needs.

.....

.....

.....

.....

.....

2. Reading Comprehension

2

Read the following passage. Then, answer the given questions by ticking ☒ the correct option:

Instead of posting letters or talking by telephone, people could communicate through computers. This idea was generated in 1969 when a student at the university of Stanford tried to log in to a university computer from his home in Los Angeles. Since then, the Internet has been causing big changes in the world that lead to positive and negative impacts on people and countries.

1. Actually, the internet has changed the world.

- ☐ True statement. ☐ False statement.

2. The synonym of the noun (impacts) on line (5) is

- ☐ effects
☐ progress
☐ immigration

3. Grammar

3

Do as required in the brackets:

1. We have (be wait) for hours, but the train hasn't arrived yet.

(Write the correct verb form)

2. Hind (while – who – which) came here yesterday is a media intern.

(Choose the correct option)

3. [1st Action] Ali was driving to the Stadium.
[2nd Action] He saw lightning.

(Combine to create one past progressive sentence)

4. Vocabulary

3

1. Replace the underlined terms with the suitable synonym:

center - biology - very bored - JobPool

a). The same movie every night! I'm bored to death.

b). Kaaba is the hub of the earth.

2. Supply the missing word from the given options:

revolution - ambitious - resume - Terrorism

Incomplete Sentences

a). One of our three vision themes is an nation.

b). is the global issue that affects every thing badly.

3. Match the underlined expression from column (A) with its explanation from column (B):

A	B
1). Recently, I've made lots of friends. I <u>fit in</u> . I'm happy.	a). allow to work
	b). become part of
2). The world's first artificial satellite was <u>launched</u> in 1957.	a). eaten launch
	b). sent into space

Questions Over

الفترة : First period الصف : اول ثانوي الزمن : 25 minutes اختبار : units 1-2	 المملكة العربية السعودية وزارة التربية والتعليم إدارة تعليم الاحساء
10	الدرجات

Name:.....

A-Choose the correct answer :

- 1-He.....(**play** - **plays**) basketball everyday.
- 2-Salem is.....(**write** - **writing**) the letter now .
- 3- I(**read** - **reads**) the holy Quran every night.
- 4-she.....(**was** - **were**) studying math yesterday.
- 5-They were(**watch** - **watching**) the series last night .

B- Match the words with their meaning :

1-to launch		a-to provide place for
2- to host		b- to set up start
3- to establish		c- to send into space

c- write the correct word under the picture below .

(**TV reporter** - **pollution** - **food scientist** - **traffic**)



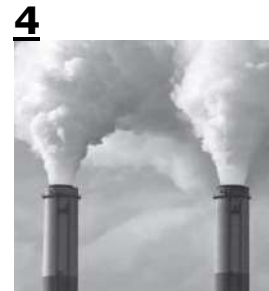


MG1 Unit 1 Big Changes L 1 CLASS: 1/...

Name:

1-Write each word under its picture:

Global warming - economy - traffic - unemployment - pollution



2- Match the following words with their meanings:

	A		B
1	launch		Provide place for
2	affect		send into space
3	establish		set up
4	host		Cause a change

3. Choose the correct answer:

1. We do not know how global warming will **affect** our future.

A. keep

B. cause a change in

C. start again

2. It is important to **establish** laws to protect our environment.

A. practice

B. come across

C. set up

3.in Riyadh is a big problem because there are so many cars.

A. Security

B. Economy

C. Traffic

4. Hotter summers are an effect of

A. global warming

B. unemployment

C. pollution



MG1 Unit 1 L 2 grammar

CLASS: 1/...

Name:

CHOOSE THE CORRECT ANSWER:

1. The moon around the earth.

A. have gone

B. went

C. goes

2. The water please turn it off.

A. boils

B. is boiling

C. boiled

3. Many people global warming.

A. not understand

B. do not understand

C. not understanding

4. Ahmed his job last year.

A. lost

B. lose

C. has lost

5. Ali today; he has a day off.

A. not work

B. don't working

C. isn't working

6. Unemployment since 2010.

A. increases

B. is increasing

C. has increased

7. Linda in Dubai last week.

A. arrived

B. arrives

C. is arriving

8. **Nora:** What are you doing? **Maha:** I my homework.

A. finishing

B. am finishing

C. have finished



MG1 Unit 1 Conversation & Reading CLASS:1/...

CONVERSATION A. Match the following words with their meanings:

1	In fact		Be part of
2	By the way		Expression used to introduce a new topic
3	Fit in		Expression used to add information

B- CHOOSE THE CORRECT ANSWER:

1. My grandparents were from Germany., they were from Berlin.

A. You bet	B. Fit in	C. In fact
------------	-----------	------------

2. Ali :....., what do you do? Saud: I'm a biologist.

A. By the way	B. in fact	C. You see
---------------	------------	------------

B- READING - CHOOSE THE CORRECT ANSWER:

1. Transforming means

A. active & strong	B. send into space	C. Changing completely
--------------------	--------------------	------------------------

2. Hub means

A. Prosperous and strong	B. center	C. Determined to success
--------------------------	-----------	--------------------------

3. Vibrant means

A. Open and honest	B. active & strong	C. Make more varied
--------------------	--------------------	---------------------

4. Ambitious means

A. grant as a wish	B. Determined to success	C. Make more varied
--------------------	--------------------------	---------------------

5. Enterprises means

A. businesses	B. Open and honest	C. start again
---------------	--------------------	----------------

6. Diversity means

A. unclear	B. Make more varied	C. grant as a wish
------------	---------------------	--------------------

7. Transparent means

A. Open & honest	B. Unsuccessful	C. unlocked
------------------	-----------------	-------------



MG1 Unit 1 Form, Meaning & Function

CLASS: 1/... Name:.....

B- CHOOSE THE CORRECT ANSWER:

1. I born in Jeddah in 2005.

A. is

B. was

C. were

2. Sheher house yesterday.

A. cleaned

B. cleans

C. is cleaning

3. Ithe game last night because I had to study.

A. not watched

B. didn't watch

C. don't watch

4. Whyyou call me 2 hours ago?

A. does

B. are

C. did

5. Sorry, I come on time for the meeting yesterday.

A. not coming

B. didn't come

C. am not came

6. **A:** Were you waiting for me there at the gate? **B:** Yes,

A. I were

B. I was not

C. I was

7. Ito school when I saw my friend Omar.

A. walked

B. walking

C. was walking

8. The students were waiting for the bus when the rain

A. started

B. start

C. starts

Unit 1-2 Exam Mega 1.1

Name:.....

Class :.....

Vocabulary A) Match the word with its meaning

- | | | |
|----------------|-----|--------------------|
| 1. vibrant | () | a- center |
| 2. established | () | b- be part of |
| 3. fit in | () | c- set up – start |
| 4. hub | () | d- active & strong |

B- Choose the correct answers :

(traffic - sculptor - economy - microscope)



.....



.....



.....



.....

Grammar A) Choose :

- 1-It is (rain – rained – raining) right now .
- 2-This is the boy (who - which – when) had an accident .
- 3-He is interested in (read - reading – reads) novels .
- 4- (How long – How much – How many) lessons has she explained ?
- 5-She (clean - cleaned - cleaning) her house yesterday .
- 6-Ahmed has (eat - eats - eaten) three burger .

B - Rewrite using capitals :

- 1- jack decided to fly to new york next monday.....
- 2-my brother has never been to dubai
- 3-riyadh is the capital of saudi arabia

GOOD LOOK

Sara Madkhali .